

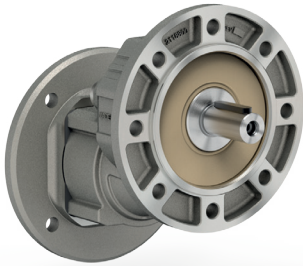
FEATURES

Caratteristiche

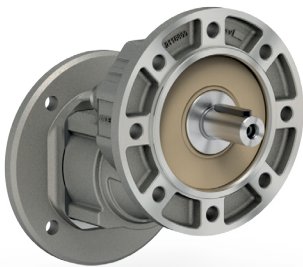
RCZ series Aluminum ratio multipliers

Riduttori ad uno stadio in alluminio

Type <i>Tipo</i>	Torque <i>Coppia</i>	Center distance <i>Interasse</i>	Input power <i>Potenza in entrata</i>	Output shaft <i>Albero in uscita</i>
211Z	20 Nm	30 mm	0.25 ÷ 0.37 kW	ø14 mm

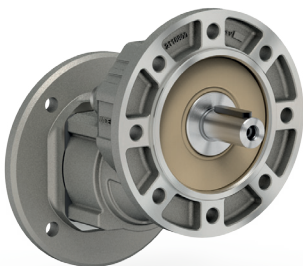


This product is:



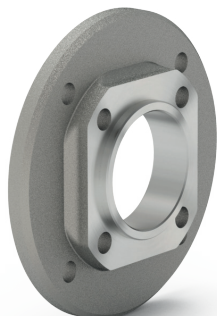
Stainless steel output shaft.

Albero in uscita in acciaio inox.



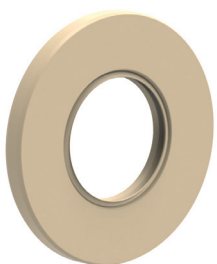
NTT™ stands for a special surface treatment which results in modified external properties of the complete unit in order to get a smooth surface and an higher corrosion resistance.

NTT™ è uno speciale trattamento che come risultato ha la modifica delle proprietà superficiali del riduttore allo scopo di ottenere una superficie liscia e con maggiore resistenza alla corrosione.

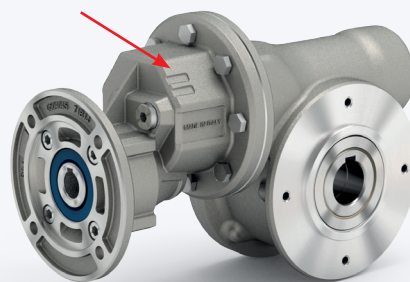


Fully modular IEC flanges and compact NEMA C motor flanges.

Flange IEC e NEMA completamente modulari.



Standard FPM (fkm) seals are used, since seals will be in a closed area.



Anelli di tenuta FPM(fkm) standard.



Hardened and ground gears.

Ingranaggi temprati e rettificati.