

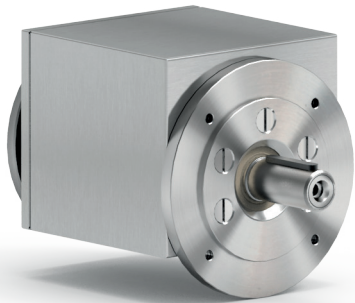
FEATURES

Caratteristiche

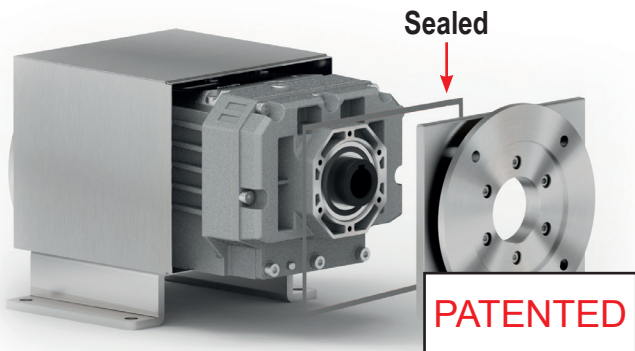
RCL series Stainless steel shielded coaxial gearboxes

Riduttori coassiali schermati in acciaio inox

Type <i>Tipo</i>	Torque <i>Coppia</i>	Center distance <i>Interasse</i>	Input power <i>Potenza in entrata</i>	Hollow output shaft <i>Albero cavo in uscita</i>
402L	160 Nm	-	0.37 ÷ 1.5 kW	ø25 mm
602L	520 Nm	-	1.1 ÷ 4.0 kW	ø35 mm

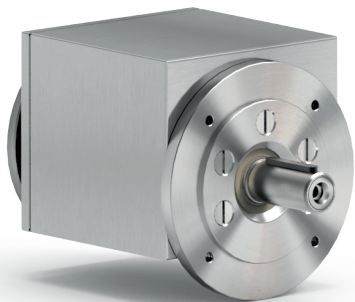


This product is:



The "L" series is an already totally enclosed aluminum gearboxes, that is shielded and sealed by stainless steel 316L case.

La serie "L" è ottenuta da un riduttore in alluminio che viene incapsulato all'interno di un carter sigillato in inox 316L.



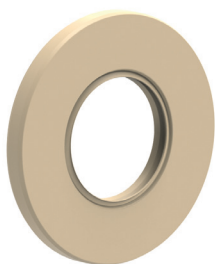
Output shaft is produced in AISI 316L.

Albero in uscita in AISI 316L.



Fully modular IEC flanges and compact NEMA C motor flanges.

Flange IEC e NEMA completamente modulari.



Standard FPM (fkm) seals.

Anelli di tenuta FPM(fkm) standard.



Hardened and ground gears.

Ingranaggi temprati e rettificati.