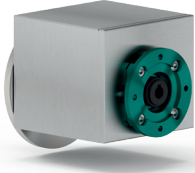
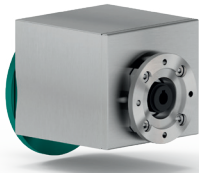
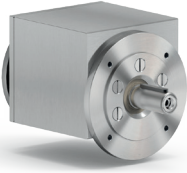
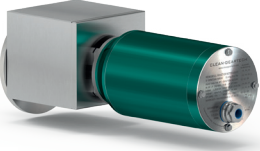
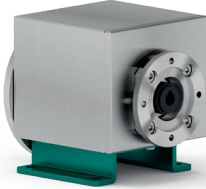
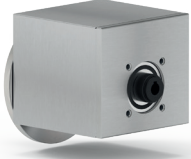


How to order

Codifica

P	402L	-F	3.52	C
Type <i>Tipo</i>	Size <i>Grandezza</i>	Mounting <i>Montaggio</i>	Ratio <i>Rapporto</i>	Output shaft <i>Albero lento</i>
P 	402L	-F 	See technical data table <i>Vedi tabelle dati tecnici</i>	
M 		H1 		V -> $\varnothing 25$
B 				

4**-T****B3****E**

With Type M specify terminal box position
Con tipo M specificare posizione morsetteria

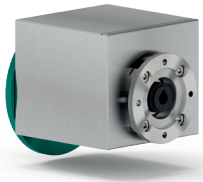
Output flange
Flangia uscita

Motor size
Grandezza motore

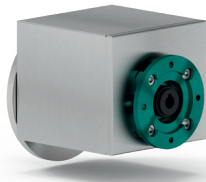
Mounting position
Posizione di montaggio

Input bore
Foro entrata

Terminal box position
Posizione morsetteria



Flange
Flange

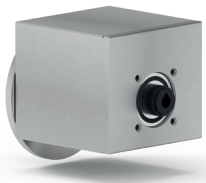


IEC B14

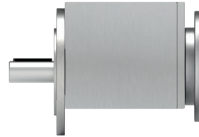
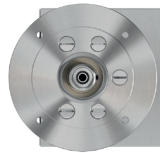
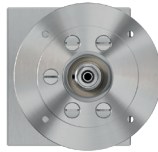
- Q** -> 71 B14 (ø105)
- R** -> 80 B14 (ø120)
- T** -> 90 B14 (ø140)

Without flange
Senza flangia

-M **With coupling**
Con giunto



3 -> ø160

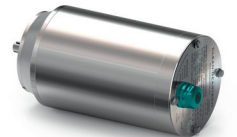
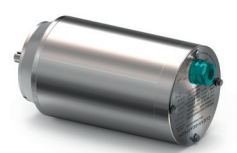
B3**B6****B7****B8****V5****V6****V8**

With coupling
Con giunto



- B** -> 11mm
- C** -> 14mm
- D** -> 19mm
- E** -> 24mm
- F** -> 28mm

0 **Ready for input coupling**
Predisposto per giunto

**A****B****C****D**