

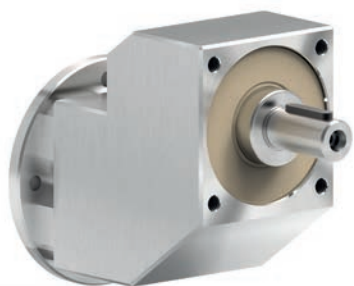
FEATURES

Caratteristiche

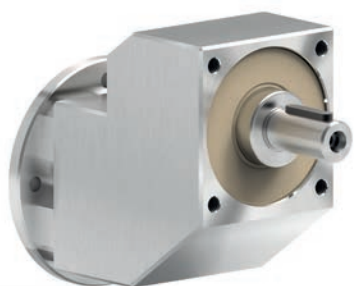
RCI series Full stainless steel ratio multipliers

Riduttori ad uno stadio completamente in acciaio inox

Type <i>Tipo</i>	Torque <i>Coppia</i>	Center distance <i>Interasse</i>	Input power <i>Potenza in entrata</i>	Output shaft <i>Albero in uscita</i>
411I	38 Nm	38 mm	0.37 ÷ 1.5 kW	ø19 mm



This product is:



Output shaft is produced in AISI 316L.

Albero in uscita in AISI 316L



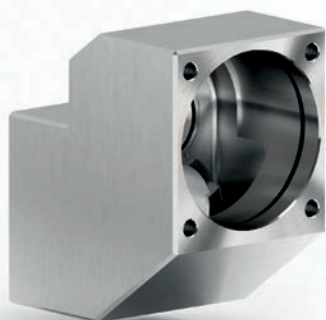
Hardened and ground gears.

Ingranaggi temprati e rettificati.



Fully modular IEC flanges and compact NEMA C motor flanges.

Flange IEC e NEMA completamente modulari.

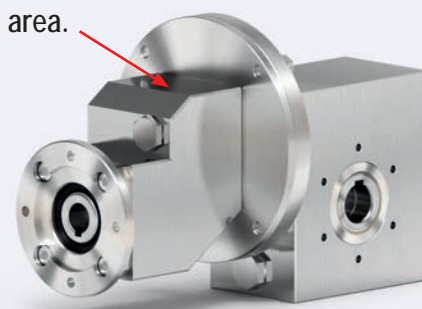


Special high tech full stainless steel housing with accurate finishing and strong rigidity.

Finitura speciale su una cassa inox che presenta un'alta rigidità strutturale.



Standard FPM (fkm) seals are used, since seals will be in a closed area.



Anelli di tenuta FPM(fkm) standard.